



## Industrial 8-port Unmanaged Gigabit Ethernet Switch

■ ■ EHG2308

RoHS compliant

### Technology

- 10/100/1000BaseT(X) (RJ45)
- Broadcast storm protection
- Support IEEE 802.3/ 802.3u/ 802.3x
- 10/100/1000M Full/Half-Duplex, MDI/MDI-X auto-detection

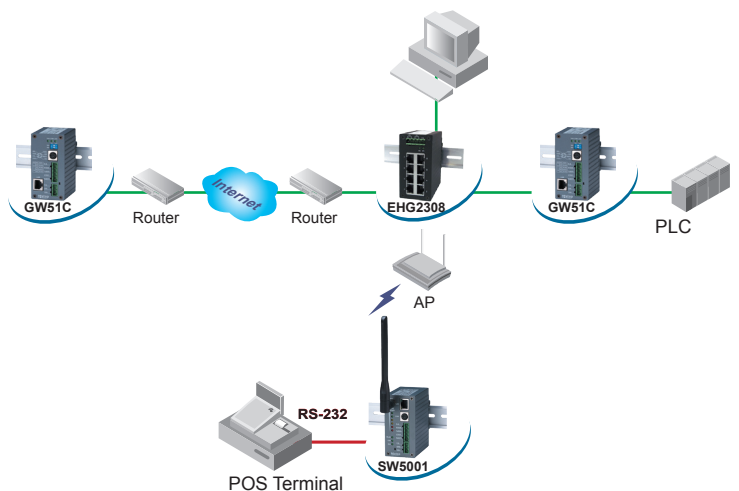
### Reliability

- Redundant dual DC power inputs
- Operating temperature ranges from -10~70°C
- Rugged high-strength housing
- DIN-Rail or wall mounting ability

EHG2308 with 8 RJ-45 Gigabit ports for your industrial applications. It designs to work in the industrial environment, such as in hazardous locations that comply with CE, FCC, UL, IP50 and RoHS standards.

EHG2308 protects itself from receiving too many broadcast packets. During normal use, broadcast packets will be forwarded to all ports except the source port. However, it will discard broadcast or multicast packets if the number of those packets exceeds a threshold in a preset period of time. When the preset period expires (about 800ms), it will then resume receiving broadcast or multicast packets until the threshold is reached again.

EHG2308 provides two redundant power inputs that can be connected simultaneously to wide-range DC power sources. If one of the power inputs failure, the other live source acts as a backup to provide the EHG2308 power needs automatically.



## Specifications

### Technology

<b>Standards</b>	IEEE802.3, 802.3u, 802.3ab, 802.3x
<b>Processing Type</b>	Store and Forward
<b>Flow Control</b>	IEEE802.3x full duplex, back pressure flow control
<b>Jumbo Frame Size</b>	Up to 9216 byte

### Interface

<b>RJ45 Ports</b>	10/100/1000BaseT(X) auto negotiation speed Full/Half-duplex mode, and auto MDI/MDI-X connection
<b>LED Indicators</b>	Power, LAN(10/100/1000M)

### Power Management

<b>Input Voltage</b>	9-48 VDC(0.45A max), Dual inputs
<b>Consumption</b>	4.05 Watts Max
<b>Connector</b>	Removable 5-pin Terminal Block for power input
<b>Reverse Polarity Protection</b>	Present

### Physical Characteristics

<b>Housing</b>	IP30 protection, metal housing
<b>Dimension(W x H x D)</b>	45.2mm x 90mm x 78mm
<b>Weight</b>	255g

### Environmental Limits

<b>Operating Temperature</b>	-10°C~70°C (14°F~158°F)
<b>Storage Temperature</b>	-40°C~85°C (-40°F~185°F)
<b>Ambient Relative Humidity</b>	5%~95% non-condensing

### Regulatory Approvals

<b>UL(Safety)</b>	UL60950-1 2nd Ed. /CSA C22.2 No.60950-1-07 2nd Ed.
<b>FCC(EMI)</b>	FCC Part 15, Subpart B, Class A
<b>CE(EMI)</b>	European Standard EN55032:2012+AC:2013 Class A. EN61000-3-2:2014, EN 61000-3-3:2013
<b>CE(EMS)</b>	EN55024:2010(IEC 61000-4-2:2008) IEC61000-4-3:2006/A1:2007/A2:2010, IEC 61000-4-4:2012 IEC 61000-4-5:2014, IEC 61000-4-6:2013 IEC 61000-4-8 :2009, IEC 61000-4-11:2004
<b>Shock</b>	IEC 60068-2-27
<b>Drop</b>	IEC 60068-2-32(ISTA Test Procedure 2A)
<b>Vibration</b>	IEC 60068-2-64
<b>High Altitude</b>	Certified for 4000m altitude according to IEC 60068-2-13
<b>RoHS</b>	Lead(Pb) Free
<b>MTBF</b>	472359.98 hrs(25°C) / 53.92 years(25°C)
<b>IP Protection</b>	IP30 IEC/EN60529
<b>Warranty</b>	5 years

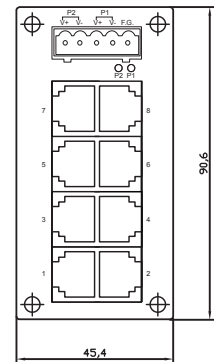
### Optional Accessories

UN315-1212 (US-Y) :	Y-Type power adapter, 100~240VAC input, 1.25A @ 12VDC output, US plug, LV6
UNE315-1212 (EU-Y) :	Y-Type power adapter, 100~240VAC input, 1.25A @ 12VDC output, EU plug, LV6
UN315-2465 (US) :	Y-Type power adapter, 100~240VAC input, 0.65A @ 24VDC output, US plug, LV6
UNE315-2465 (EU) :	Y-Type power adapter, 100~240VAC input, 0.65A @ 24VDC output, EU plug, LV6

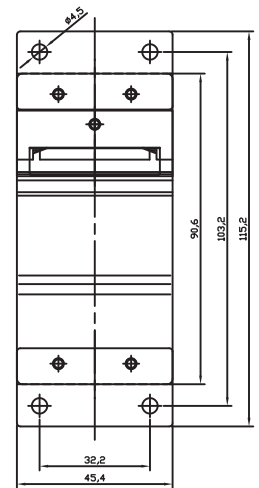
DIN-Rail mount, Wall mount

### Ordering Information

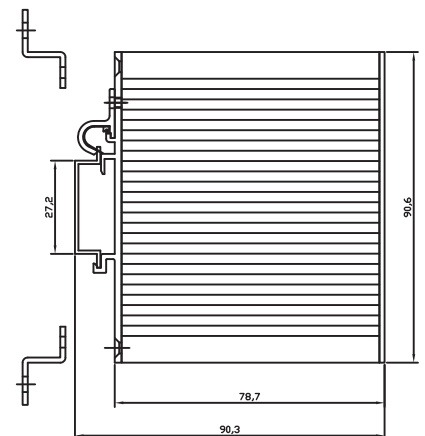
Model Name	Port Interface		
Extended Temperature (-10°C ~ 70°C)	10/100/1000BaseT(X)	100BaseFX	
		Multi Mode ST Connector	Single Mode SC Connector
EHG2308	8	----	----



Front-panel front view



Backboard rear view



(Mount kit)

Housing side view

### Atop Technologies, Inc.

TEL : +886-3-5508137

FAX : +886-3-5508131

sales@atop.com.tw

http://www.atop.com.tw

Design and specification are subjected to change without notice.

All product names referenced herein are registered trademarks of their respective companies.

